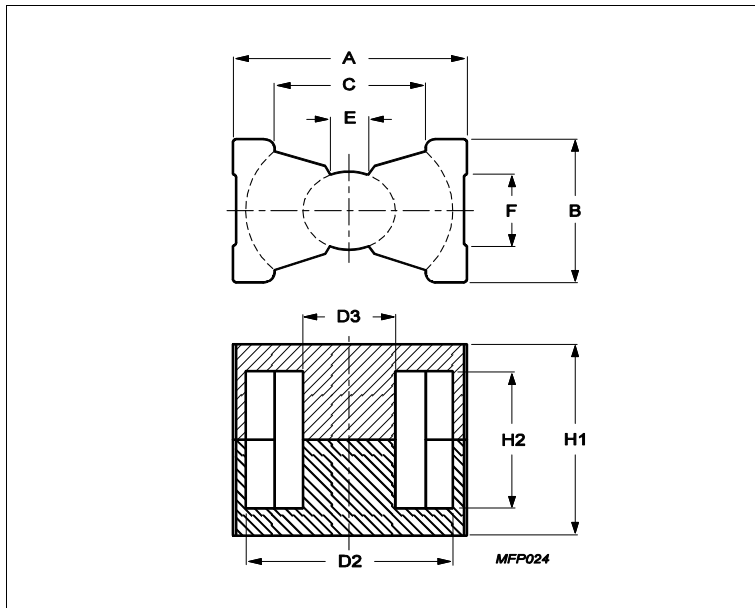


## Core **PQ40/40**



Effective parameters			
	Parameter	Value	Unit
$\Sigma(I/A)$	core factor (C1)	0.507	mm <sup>-1</sup>
<b>Ve</b>	effective volume	20500	mm <sup>3</sup>
<b>Le</b>	effective length	102	mm
<b>Ae</b>	effective area	201	mm <sup>2</sup>
<b>Amin</b>	minimum area	175	mm <sup>2</sup>
<b>m</b>	PQ40/40	≈ 97	g/set

Dimensions for product: PQ40/40						
	Nom	Tol +	Tol -	Max	Min	Unit
<b>A</b>	41.50	0.90	0.90	42.40	40.60	mm
<b>B</b>	28.00	0.60	0.60	28.60	27.40	mm
<b>C</b>					28.00	mm
<b>D2</b>	37.00	0.60	0.60	37.60	36.40	mm
<b>D3</b>	14.90	0.30	0.30	15.20	14.60	mm
<b>E</b>					6.05	mm
<b>F</b>					15.00	mm
<b>H1</b>	39.80	0.30	0.30	40.10	39.50	mm
<b>H2</b>	29.50	0.40	0.40	29.90	29.10	mm

Inductance factor				
Material	Value	Tol +	Tol -	Unit
3C94	4900	25%	25%	nH/turns <sup>2</sup>
3C95	6100	25%	25%	nH/turns <sup>2</sup>
3C96	4200	25%	25%	nH/turns <sup>2</sup>
3C97	6100	25%	25%	nH/turns <sup>2</sup>
3F36	2900	25%	25%	nH/turns <sup>2</sup>
3F4	2100	25%	25%	nH/turns <sup>2</sup>

Power loss: 3C94				
Measuring conditions			Max	Unit
100 kHz	200 mT	100 °C	10.000	W/set
Power loss: 3C95				
Measuring conditions			Max	Unit

## Core **PQ40/40**

Power loss: 3C95				
Measuring conditions			Max	Unit
100 kHz	200 mT	100 °C	9.800	W/set
100 kHz	200 mT	25 °C	11.000	W/set
Power loss: 3C96				
Measuring conditions			Max	Unit
100 kHz	200 mT	100 °C	9.200	W/set
400 kHz	50 mT	100 °C	4.200	W/set
Power loss: 3C97				
Measuring conditions			Max	Unit
100 kHz	200 mT	60 °C	10.000	W/set
100 kHz	200 mT	120 °C	9.800	W/set
100 kHz	200 mT	140 °C	12.000	W/set
Power loss: 3F36				
Measuring conditions			Max	Unit
500 kHz	50 mT	100 °C	3.200	W/set
500 kHz	100 mT	100 °C	24.000	W/set
Power loss: 3F4				
Measuring conditions			Max	Unit
1000 kHz	30 mT	100 °C	6.600	W/set
3000 kHz	10 mT	100 °C	10.000	W/set

Bsat					
Measuring conditions			Material	Min	Unit
25 kHz	250 A/m	100 °C	3C94	320	mT
25 kHz	250 A/m	100 °C	3C95	330	mT
25 kHz	250 A/m	100 °C	3C96	340	mT
25 kHz	250 A/m	100 °C	3C97	330	mT
25 kHz	250 A/m	100 °C	3F36	340	mT
25 kHz	250 A/m	100 °C	3F4	330	mT

Accessories		
Ordering name	Description	Ordering code
CLM/P-PQ40/40	Clamp, with ground pin	F0MPQ04040CLMP000P
CSV-PQ40/40-1S-12P	Coil former, termoset, vertical	F0SPQ04040CV00112P